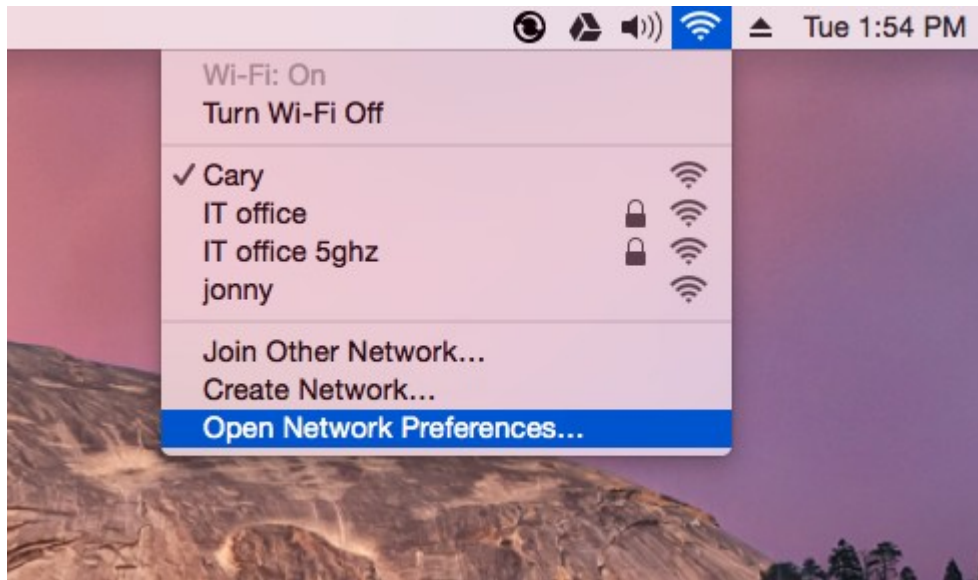
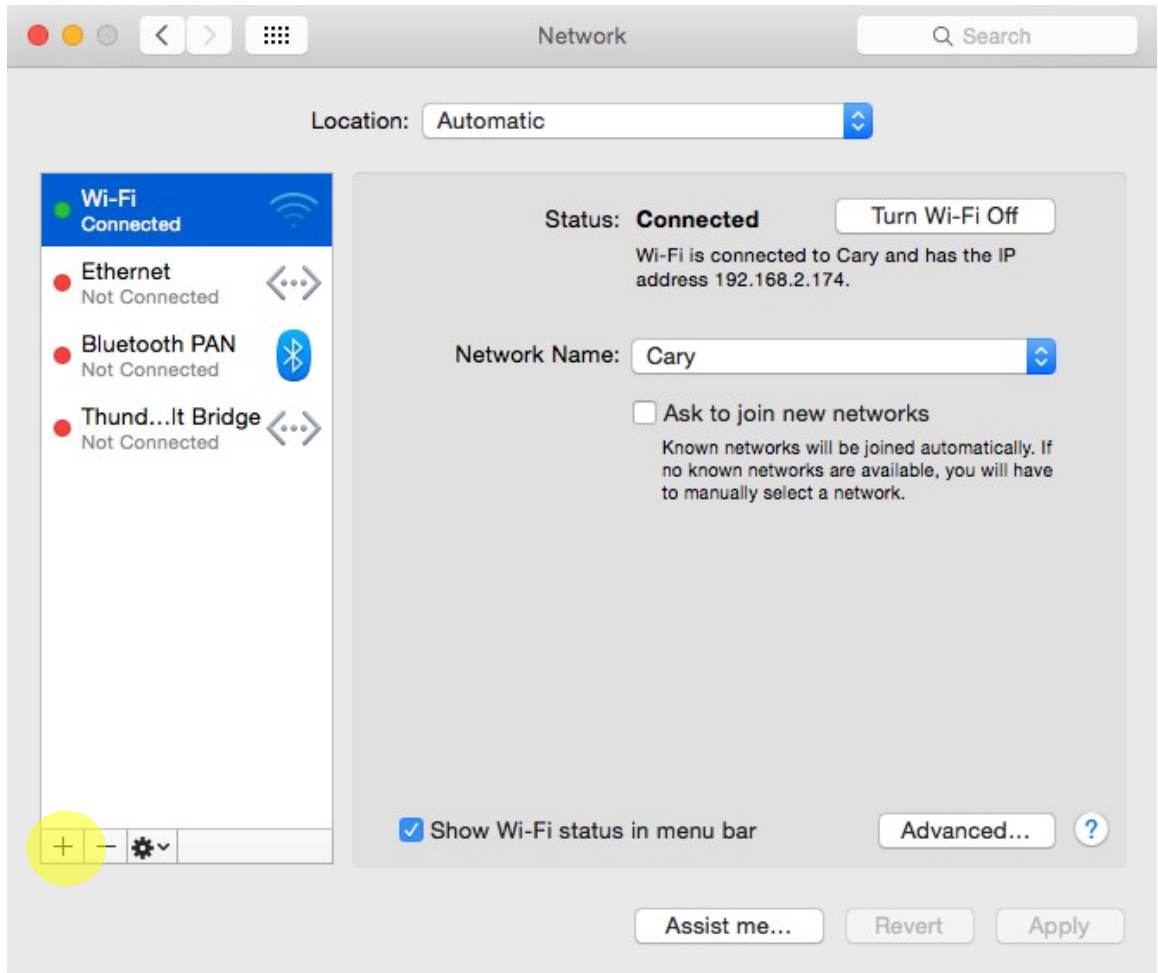


1. Click the Network icon and select “Open Network Preferences”



## 2. Click the + symbol on the left



### 3. Pull down menus as follows

a) Interface: VPN

then the “VPN Type” menu will appear

b) VPN Type: L2TP over IPSec

c) Service Name: Cary-VPN

Click Create

Select the interface and enter a name for the new service.

Interface:

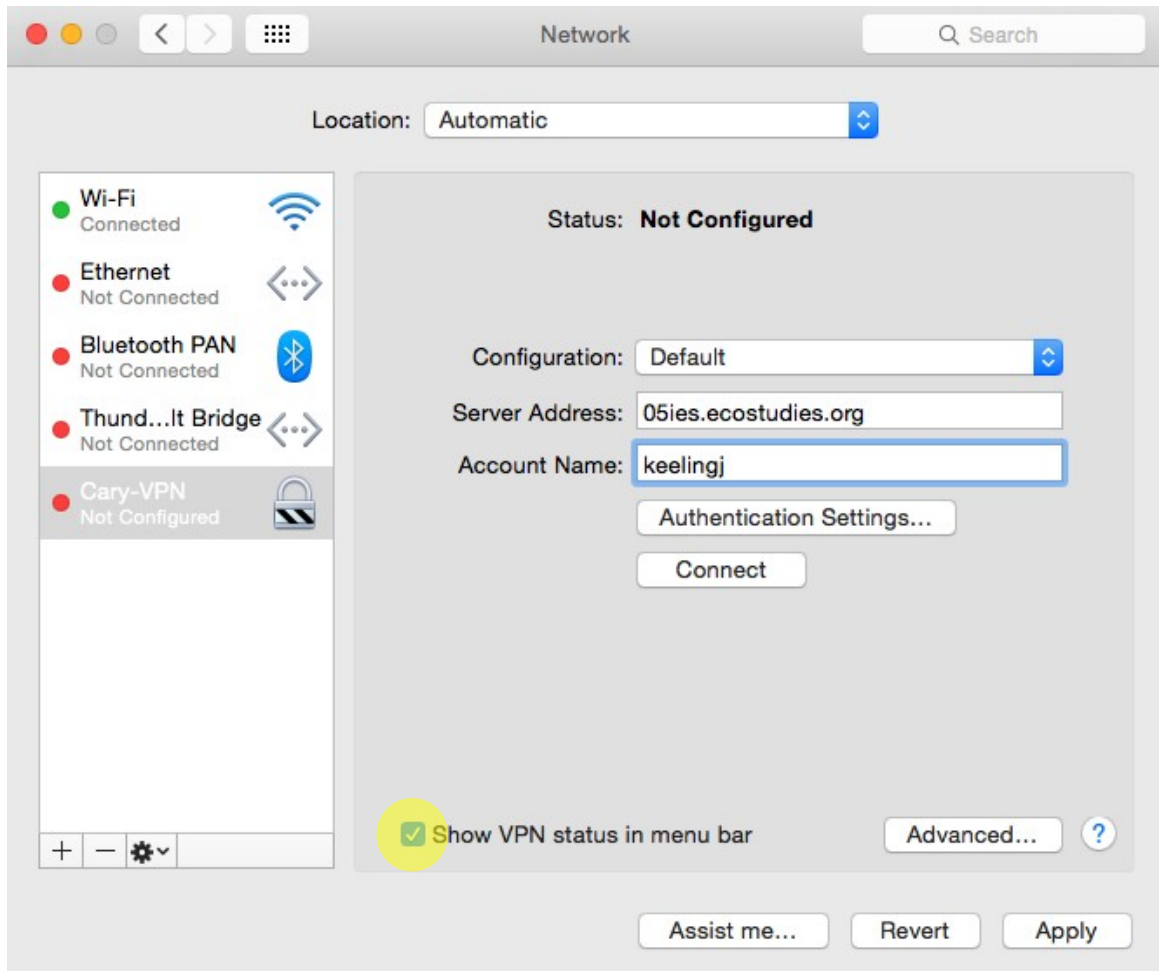
VPN Type:

Service Name:

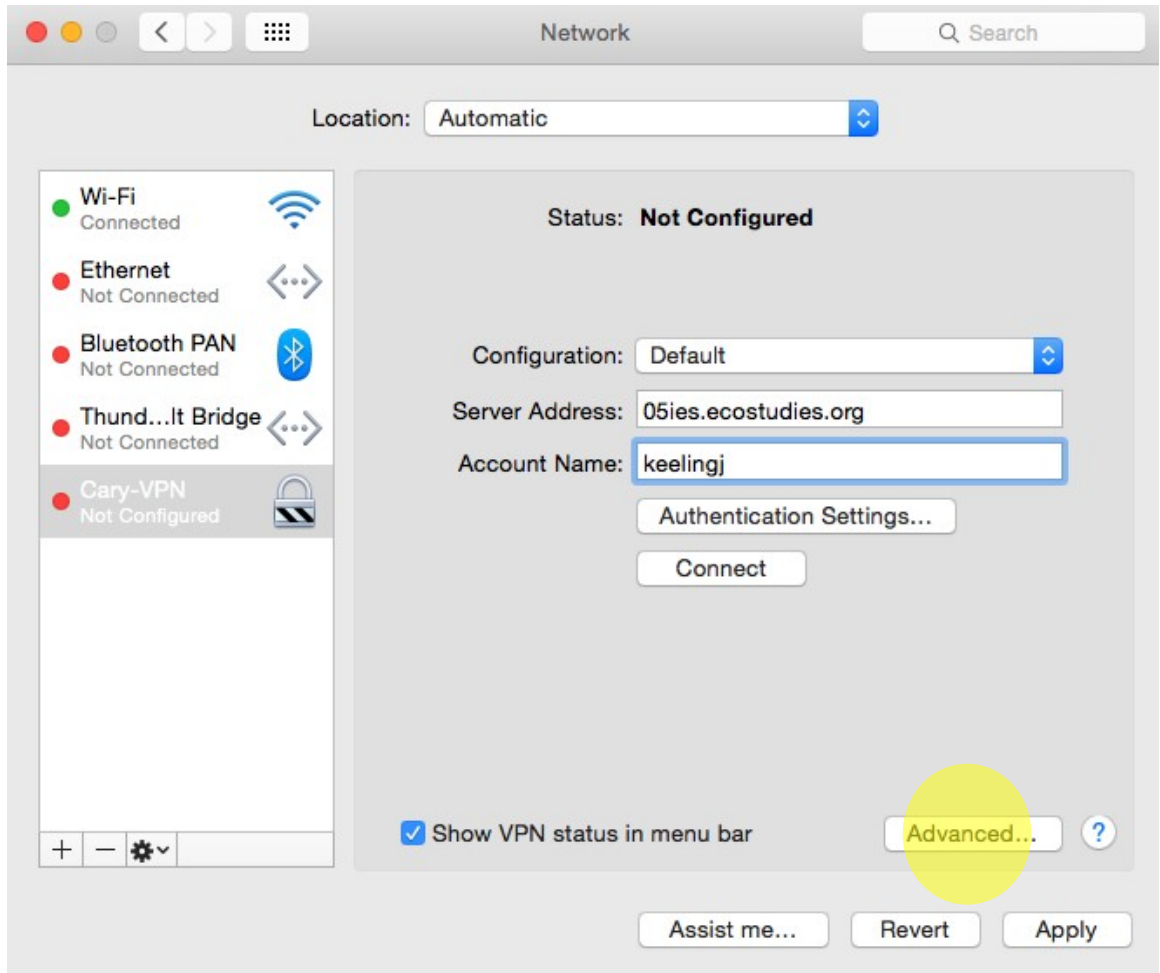
#### 4. Check “Show VPN status in menu bar”

a) Server Address: 05ies.ecostudies.org

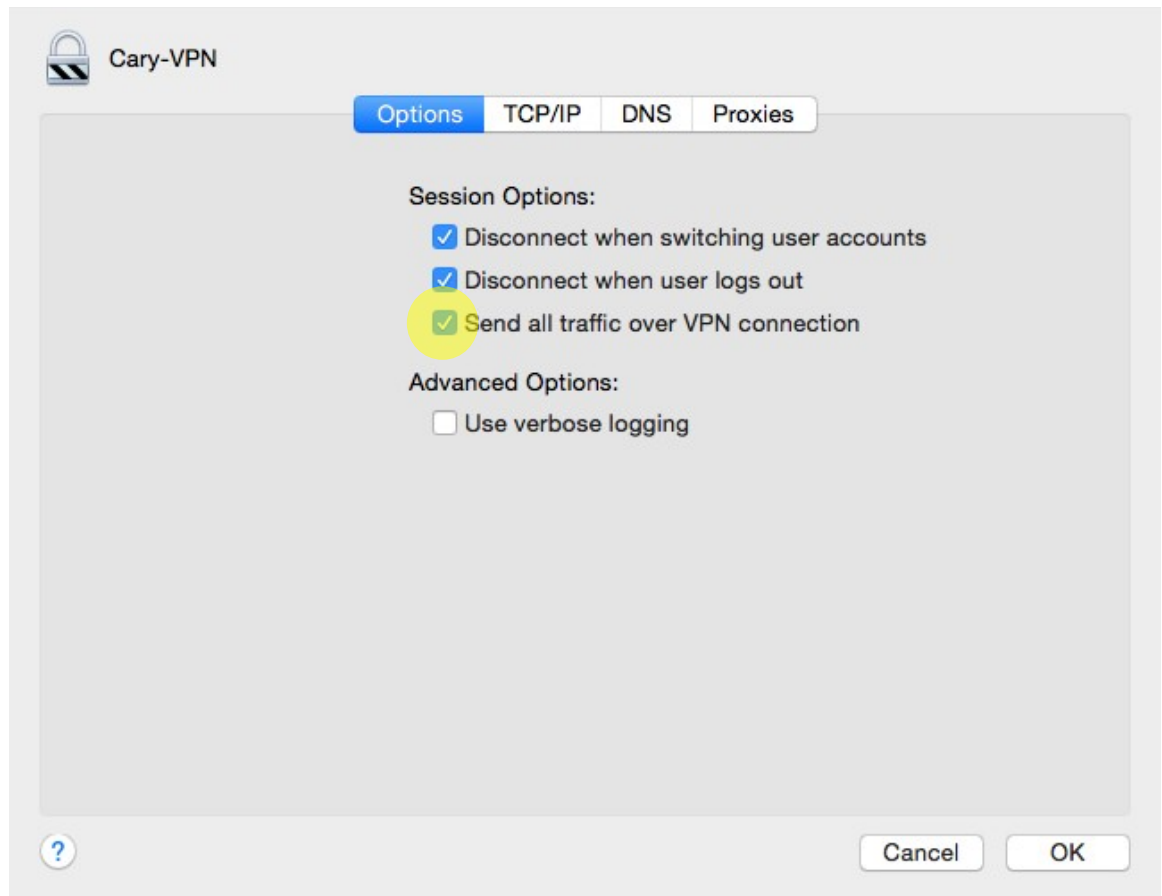
b) Account name: LastNameFirstInitial



## 5. Click the Advanced button



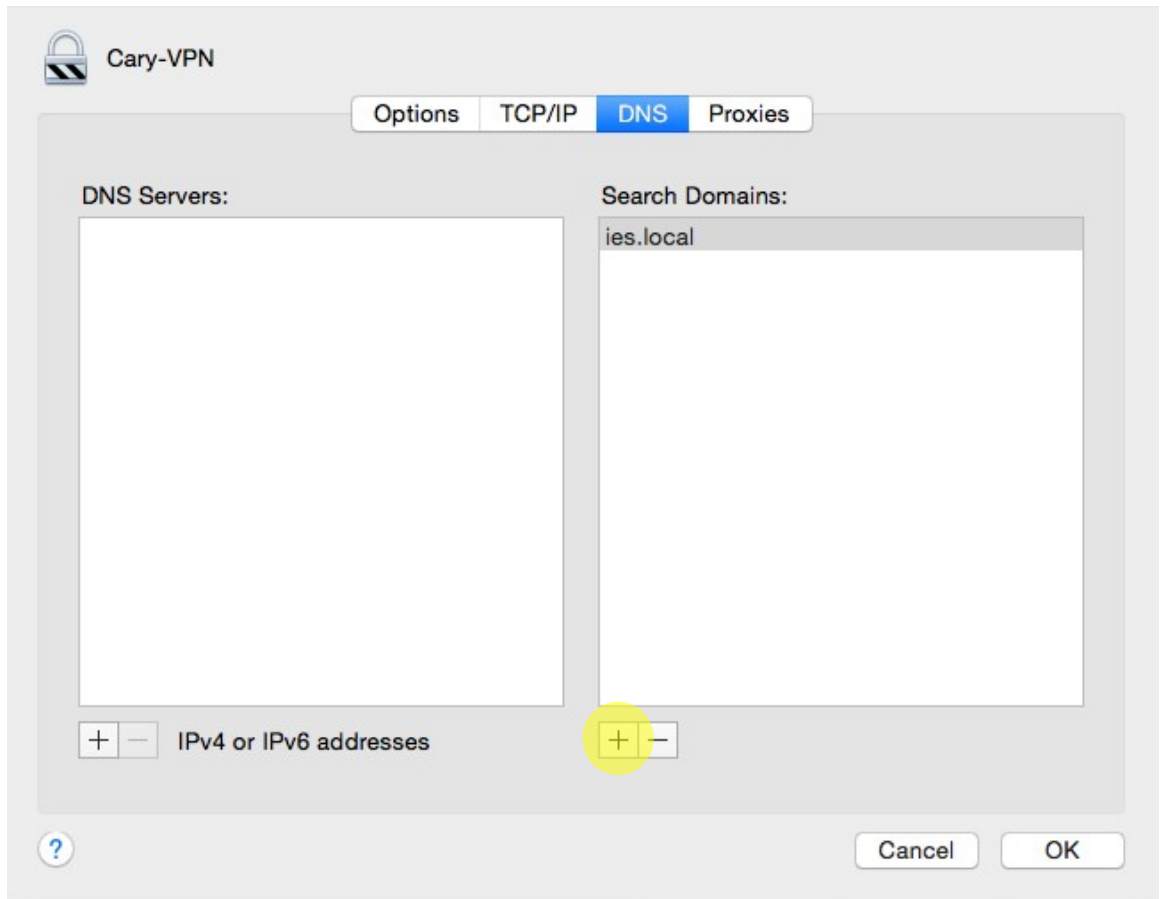
## 6. Check “Send all traffic over VPN connection”



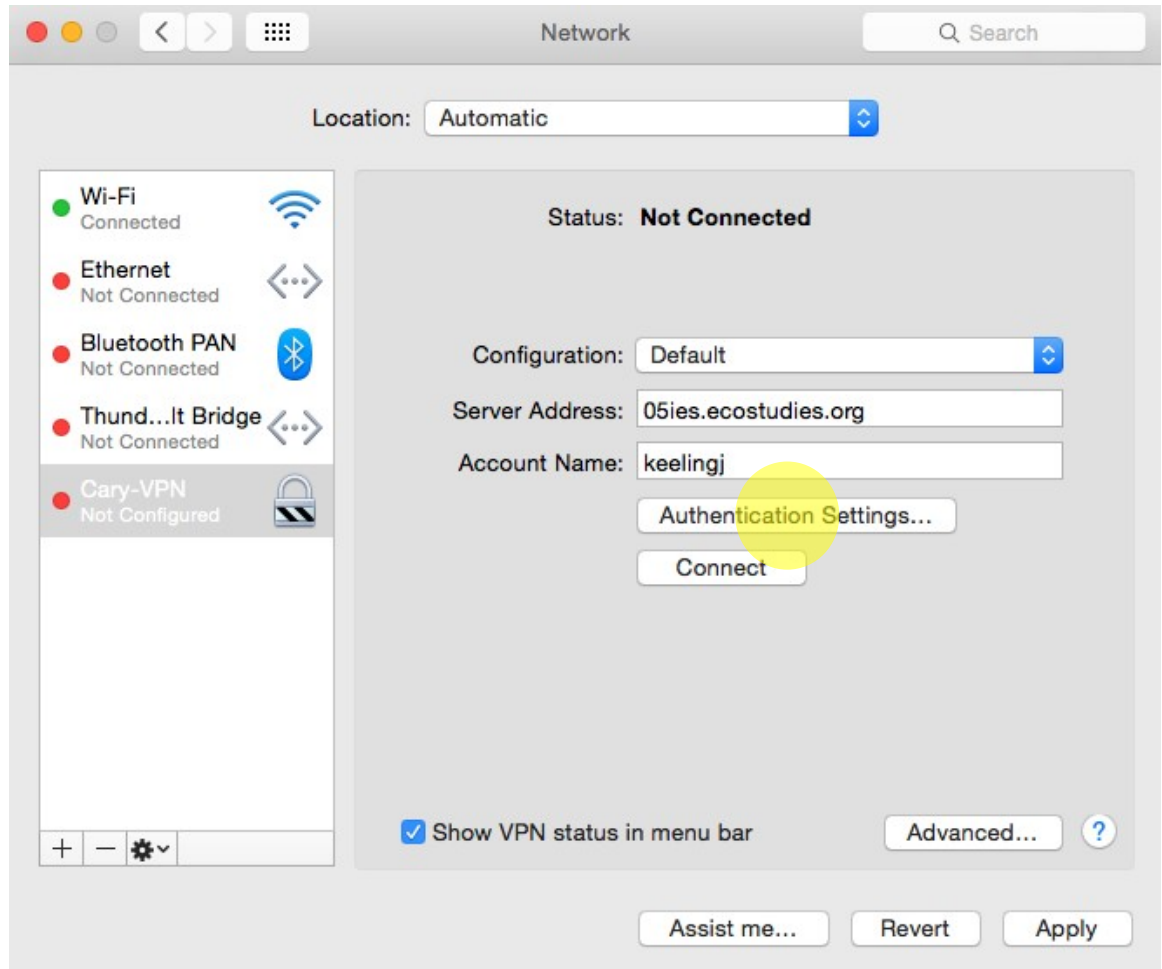
## 7. Click the DNS tab

Click the + sign under Search Domains and enter "ies.local"

Click the OK button



## 8. Click the Authentication Settings button



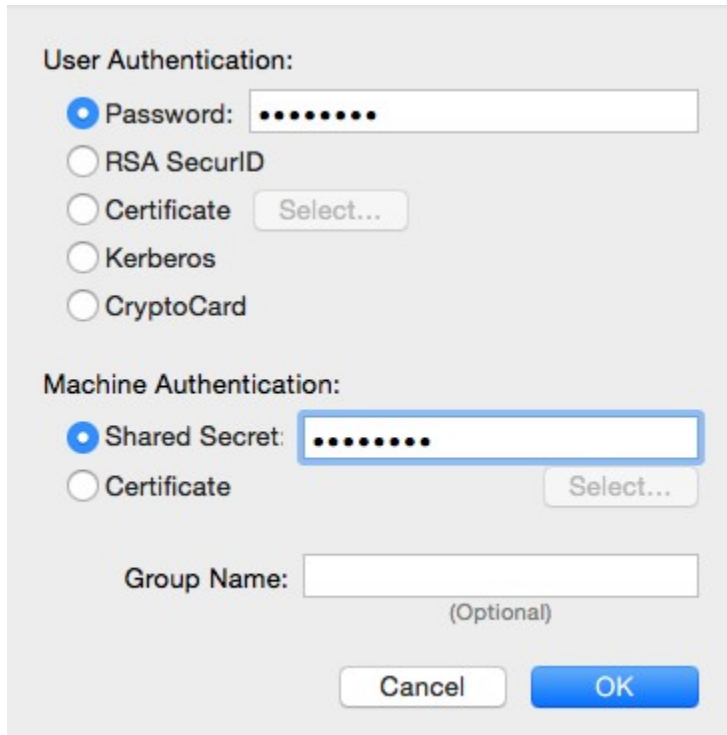


**9. Enter the following**

**a) Shared Secret: PlantSci**

**b) Password: Your Cary account password**

**Click OK**



The image shows a 'User Authentication' dialog box with the following elements:

- User Authentication:**
  - Password: [password field with 8 dots]
  - RSA SecurID
  - Certificate [Select...]
  - Kerberos
  - CryptoCard
- Machine Authentication:**
  - Shared Secret: [password field with 8 dots]
  - Certificate [Select...]
- Group Name:** [empty text field] (Optional)
- Buttons:** Cancel, OK

## 10. Click Connect

